

1511 Johanna Street



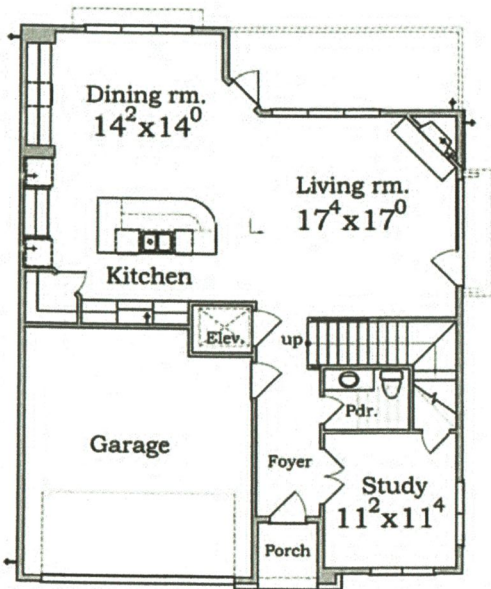
Approx. Living Area	
First Floor	1,172 sq. ft.
Second Floor	1,655 sq. ft.
Third Floor	474 sq. ft.
Total	3,301 sq. ft.

 **Parc Cunningham III**

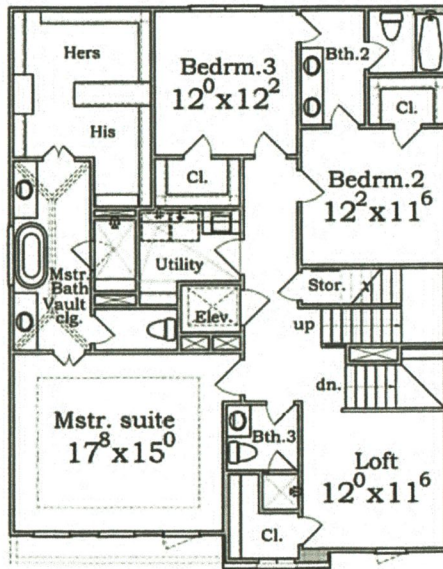
 **Cunningham Custom Builders**
(713) 838-1212

Perimeter 37'-2" x 47'-6"
Job No. 180702

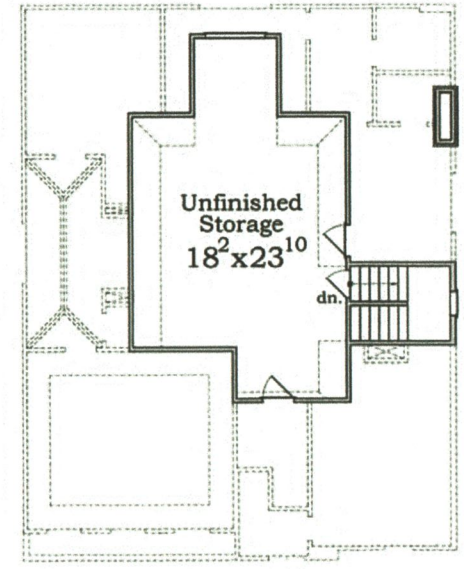
This drawing is only a representation. Room sizes and square footages are approximate. Builder reserves the right to alter plans, specifications and materials.



First Floor Plan



Second Floor Plan



Third Floor Plan